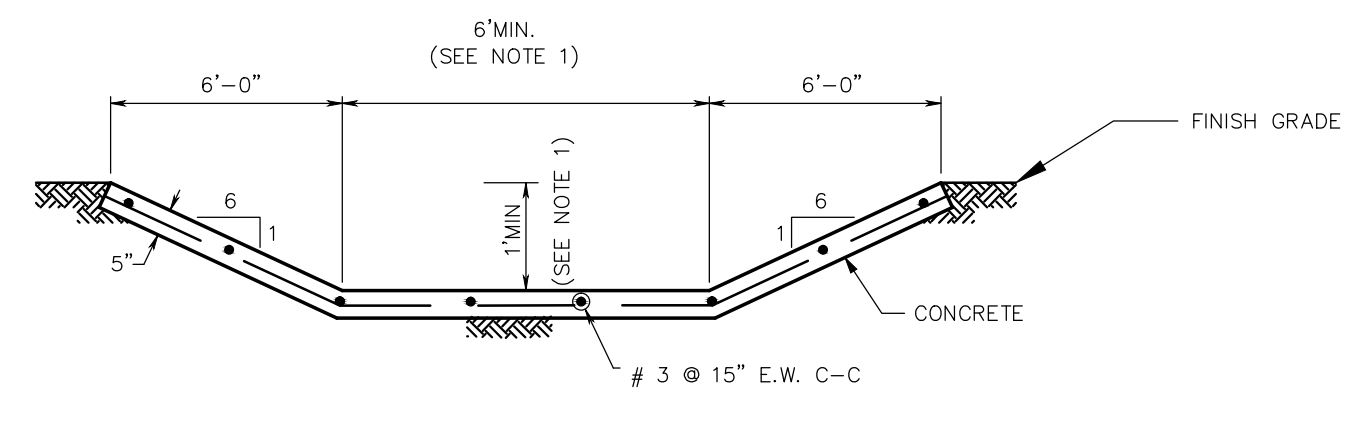


**BDD#4 SPECIAL NOTES**

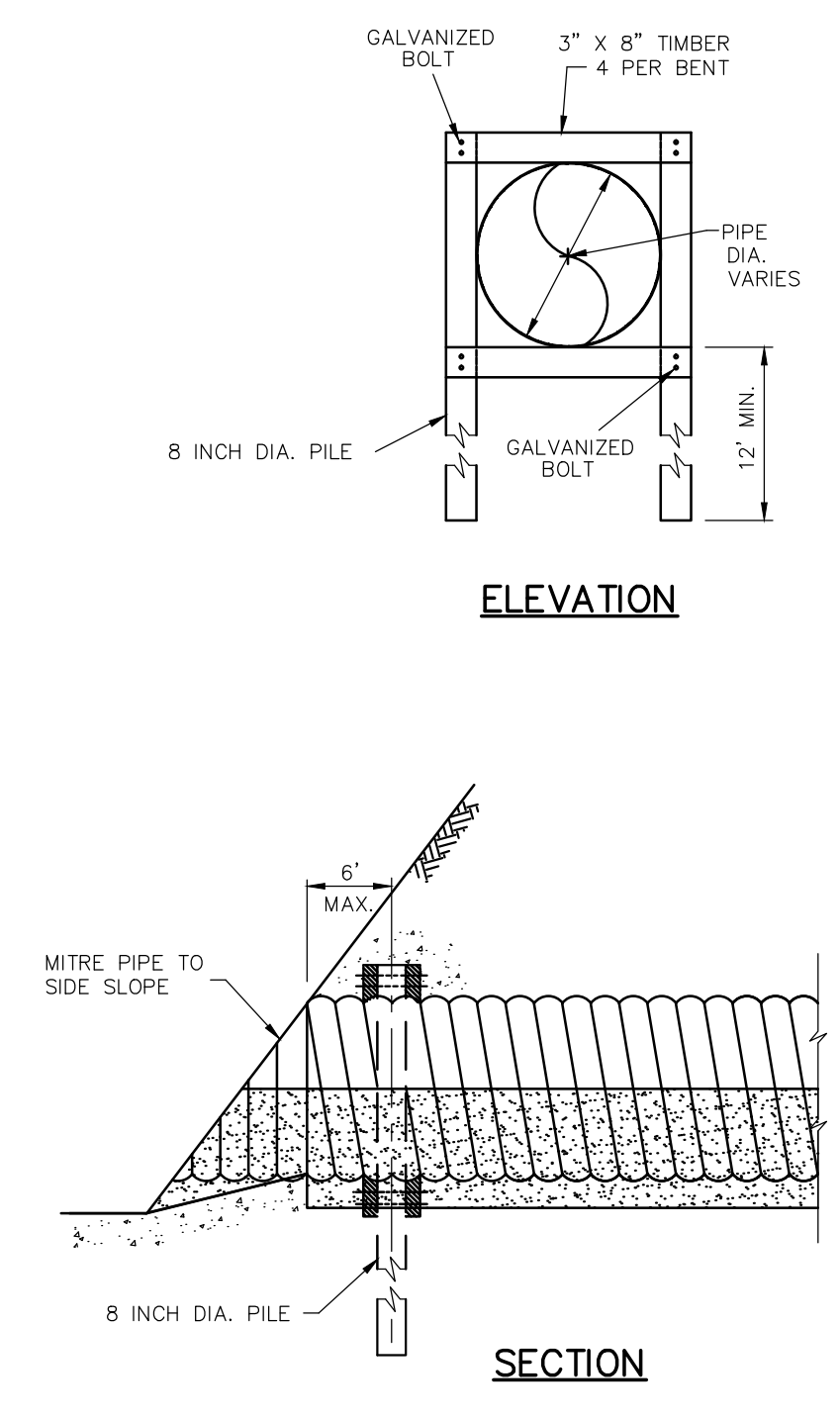
- ANY GOVERNMENTAL BODY FOR PURPOSES OF DRAINAGE WORK MAY USE DRAINAGE EASEMENTS AND FEE STRIPS PROVIDED THE DISTRICT IS PROPERLY NOTIFIED.
- PERMANENT STRUCTURES, INCLUDING FENCES AND PERMANENT LANDSCAPING, SHALL NOT BE ERRECTED IN A DRAINAGE EASEMENT OR FEE STRIPS.
- MAINTENANCE OF DETENTION FACILITIES IS THE SOLE RESPONSIBILITY OF THE OWNER OF THE PROPERTY. THE DISTRICT WILL PROVIDE MAINTENANCE OF REGIONAL FACILITIES OWNED AND CONSTRUCTED BY THE DISTRICT, OR SUBREGIONAL FACILITIES CONSTRUCTED BY DEVELOPER(S) FOR WHICH OWNERSHIP HAS BEEN TRANSFERRED TO THE DISTRICT WITH THE DISTRICTS APPROVAL. THE DISTRICT IS RESPONSIBLE ONLY FOR THE MAINTENANCE OF FACILITIES OWNED BY THE DISTRICT UNLESS THE DISTRICT SPECIFICALLY CONTRACTS OR AGREES TO MAINTAIN OTHER FACILITIES.
- CONTRACTOR SHALL NOTIFY THE DISTRICT IN WRITING AT LEAST FORTY-EIGHT (48) HOURS BEFORE PLACING ANY CONCRETE FOR DRAINAGE STRUCTURES.
- THE DISTRICTS PERSONNEL SHALL HAVE THE RIGHT TO ENTER UPON THE PROPERTY FOR INSPECTION AT ANY TIME DURING CONSTRUCTION OR AS MAY BE WARRANTED TO ENSURE THE DETENTION FACILITY IS OPERATING PROPERLY.
- APPROPRIATE COVER FOR THE SIDE SLOPES, BOTTOM AND MAINTENANCE BERM SHALL BE ESTABLISHED PRIOR TO ACCEPTANCE OF THE CONSTRUCTION BY THE DISTRICT. AT LEAST 95% GERMINATION OF THE GRASS MUST BE ESTABLISHED PRIOR TO ACCEPTANCE OF CONSTRUCTION BY THE DISTRICT.
- NO BUILDING PERMIT SHALL BE ISSUED FOR ANY LOT WITHIN THIS DEVELOPMENT UNTIL THE DETENTION FACILITY HAS BEEN CONSTRUCTED AND APPROVED BY THE DISTRICT.
- THE DISTRICTS APPROVAL OF THE FINAL DRAINAGE PLAN (AND FINAL PLAT IF REQUIRED) DOES NOT AFFECT THE PROPERTY RIGHTS OF THIRD PARTIES. THE DEVELOPER IS RESPONSIBLE FOR OBTAINING AND MAINTAINING ANY AND ALL EASEMENTS, FEE STRIPS AND/OR ANY OTHER RIGHTS-OF-WAY ACROSS THIRD PARTIES' PROPERTIES FOR PURPOSES OF MOVING EXCESS RUNOFF TO THE DISTRICTS DRAINAGE FACILITIES AS CONTEMPLATED BY THE FINAL DRAINAGE PLAN AND FINAL PLAT.

SEE THE RULES, REGULATIONS AND GUIDELINES FOR BRAZORIA DRAINAGE DISTRICT NO. 4, APPENDIX "A". EFFECTIVE MAY 1, 2013.



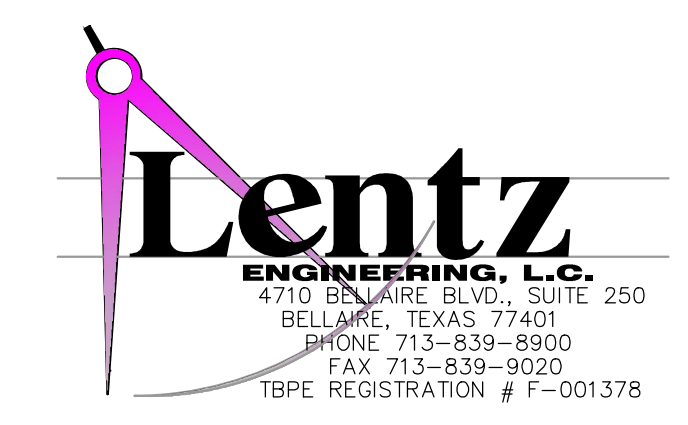
**NOTES:**

- THE DIMENSIONS SHOWN ARE THE MINIMUM REQUIRED BY THE DISTRICT.
- THE PAVING THICKNESS AND REBAR PLACEMENT SHALL MEET THE MINIMUM REQUIREMENTS SHOWN IN THIS DETAIL. THE ENGINEER IS RESPONSIBLE FOR DESIGNING THE PAVEMENT AND REINFORCEMENT BASED UPON THE SITE CONDITIONS.
- ALL CONCRETE MUST HAVE A MINIMUM COMPRESSIVE STRENGTH OF 3,000 PSI AT 28 DAYS.



NO.	DATE	REVISIONS	APP.
06-01-10	EFFECTIVE		
05-01-13	REVISED STANDARD DETAILS.		JDA

**BRAZORIA DRAINAGE DISTRICT NO. 4**



STANDARD DETAILS		
DRAWN BY:		SCALE: NTS
DESIGNED BY:		DATE UPDATED: 05-01-13
APPROVED BY:		SHEET NO.: 4 OF 4
JOB NO.:		