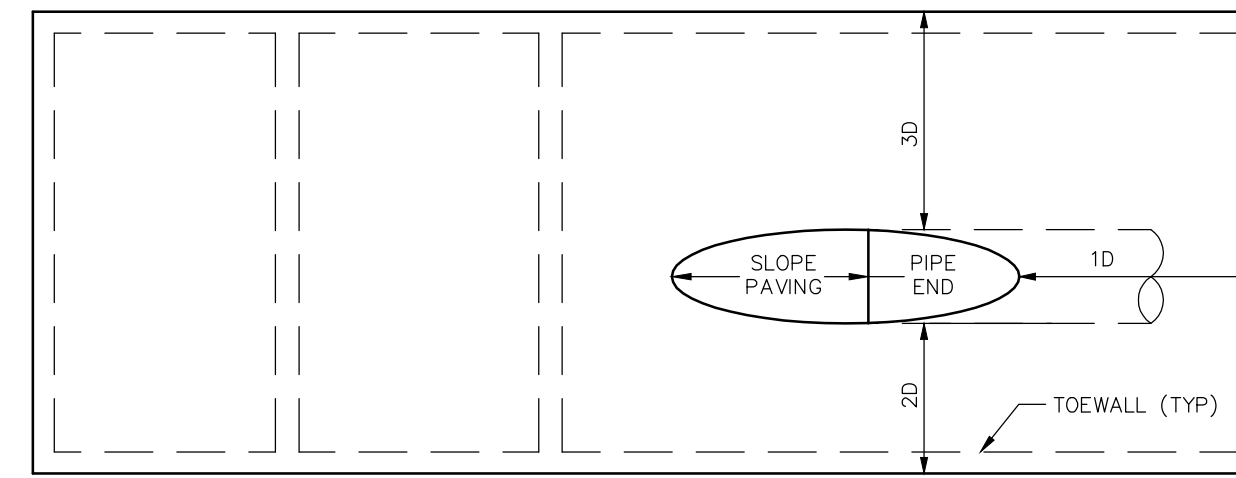


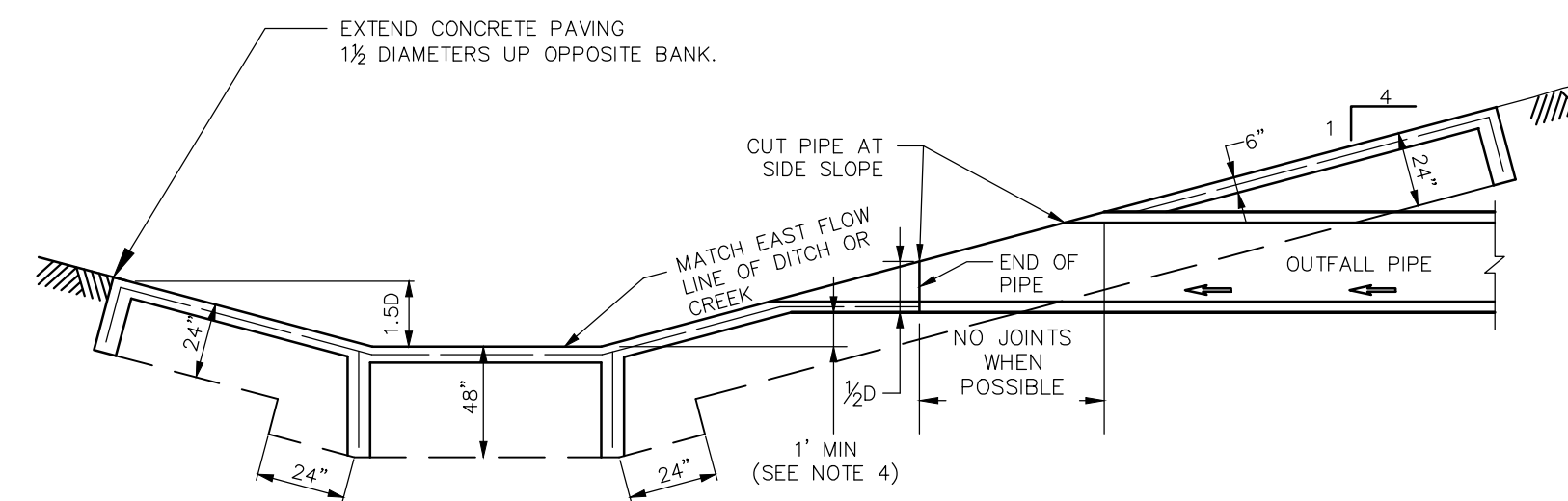
**NOTES:**

1. THE DIMENSIONS SHOWN ARE THE MINIMUM REQUIRED BY THE DISTRICT.
2. THE PAVING THICKNESS AND REBAR PLACEMENT SHALL MEET THE MINIMUM REQUIREMENTS SHOWN IN THIS DETAIL. THE ENGINEER IS RESPONSIBLE FOR DESIGNING THE PAVEMENT AND REINFORCEMENT BASED UPON THE SITE CONDITIONS.
3. ALL CONCRETE MUST HAVE A MINIMUM COMPRESSIVE STRENGTH OF 3,000 PSI AT 28 DAYS.
4. PILOT CHANNEL SHALL BE AT LEAST 1 FOOT WIDER THAN THE DIAMETER OF ANY PIPE CONNECTED TO THE PILOT CHANNEL.

DETENTION BASIN PILOT CHANNEL  
DETAIL 2013-07-18-05



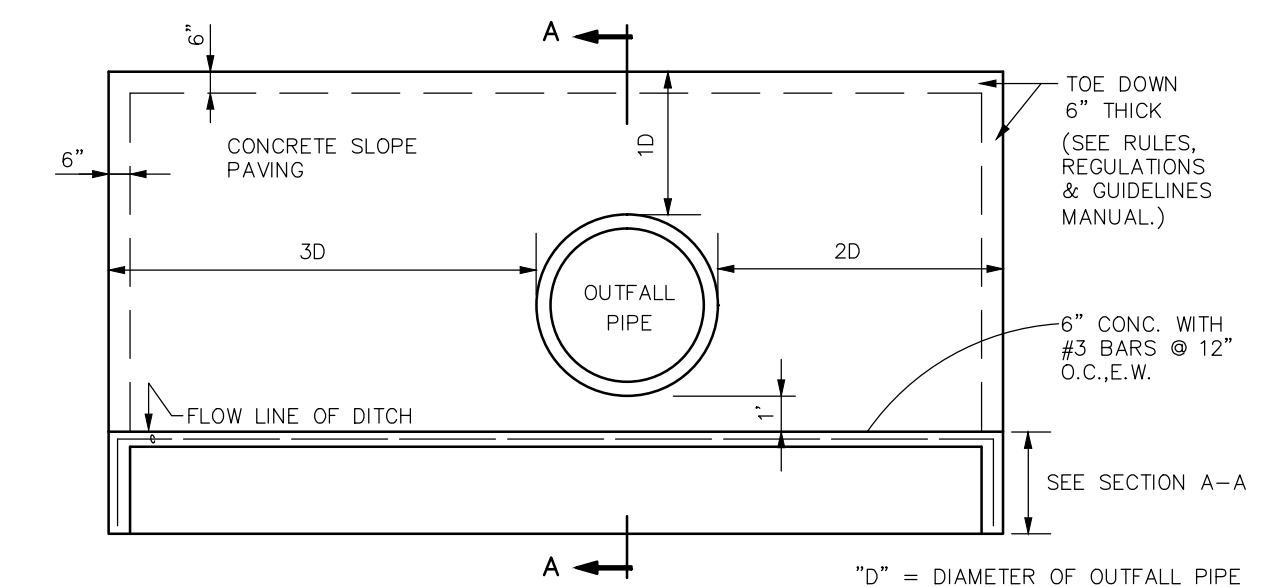
TOP VIEW



SECTION A-A

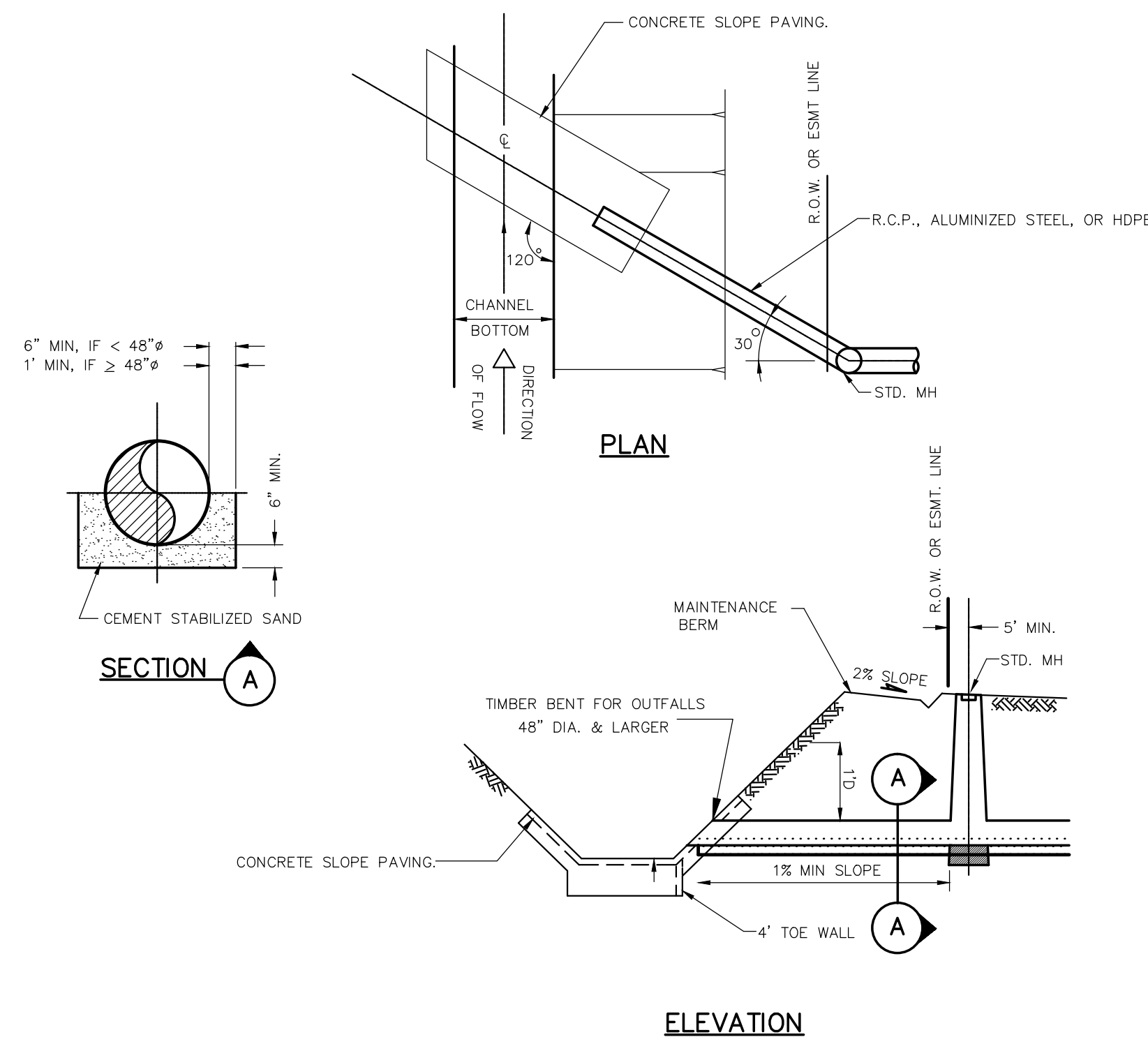
**NOTES:**

1. THE DIMENSIONS SHOWN ARE THE MINIMUM REQUIRED BY THE DISTRICT.
2. THE PAVING THICKNESS AND REBAR PLACEMENT SHALL MEET THE MINIMUM REQUIREMENTS SHOWN IN THIS DETAIL. THE ENGINEER IS RESPONSIBLE FOR DESIGNING THE PAVEMENT AND REINFORCEMENT BASED UPON THE SITE CONDITIONS.
3. ALL CONCRETE MUST HAVE A MINIMUM COMPRESSIVE STRENGTH OF 3,000 PSI AT 28 DAYS.
4. THE PROPOSED FLOWLINE OF THE PIPE SHALL BE PLACED A MINIMUM OF 1' ABOVE THE EXISTING FLOW LINE OF THE DITCH OR ORDINARY HIGH WATER MARK, WHICHEVER IS HIGHER.

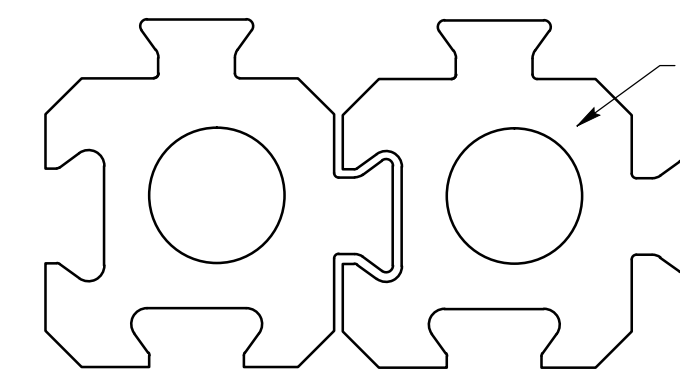


SIDE VIEW

TYPICAL DRAWING  
OUTFALL PIPE TO DISTRICT OWNED  
AND/OR MAINTAINED FACILITIES  
DETAIL 2013-07-18-02

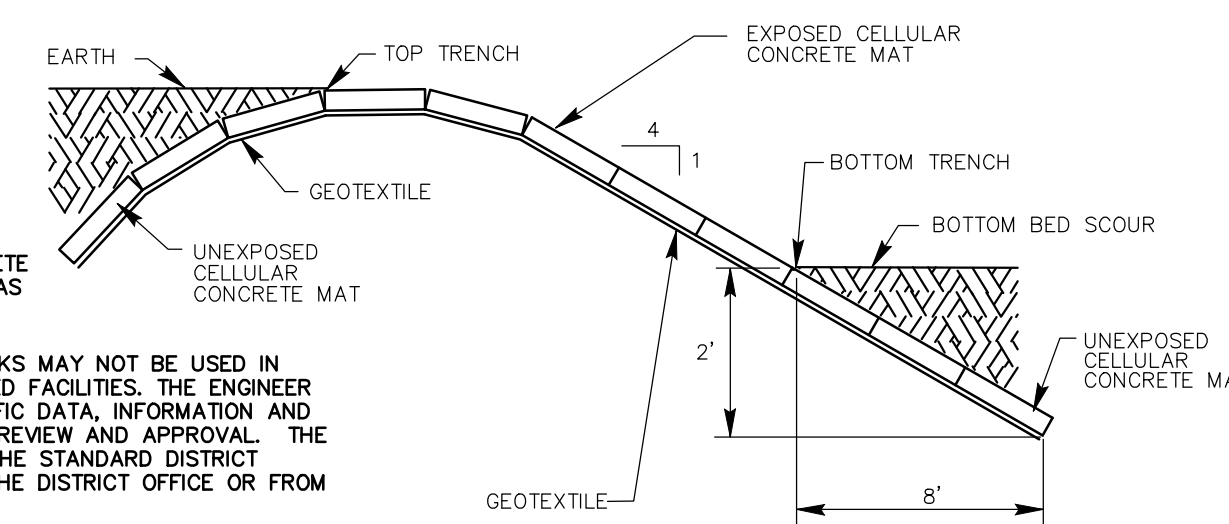


TYPICAL STORM SEWER  
OUTFALL LAYOUT  
DETAIL 2013-07-18-03



DETAIL - BLOCK

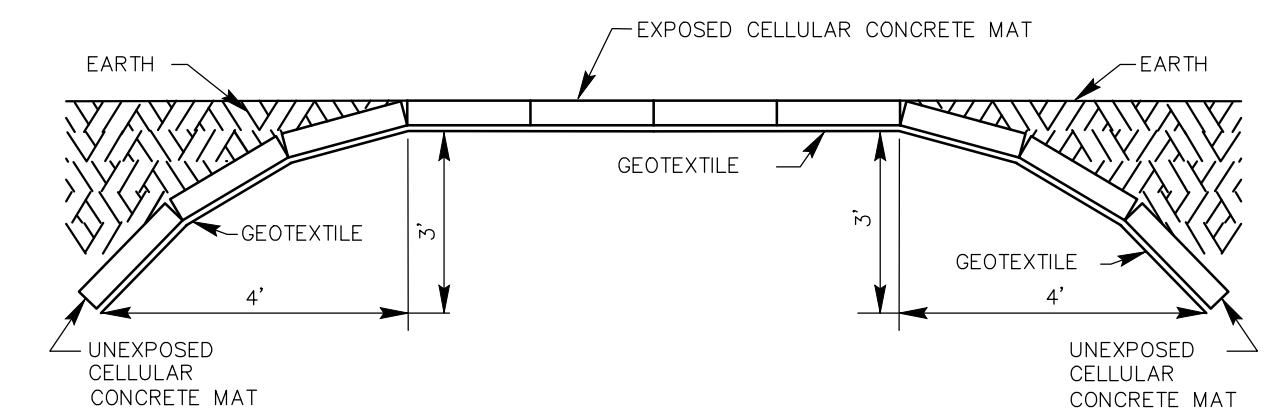
- CELLULAR CONCRETE BLOCKS WITHOUT CABLES
- NOTE 1:** GEOTEXTILE TYPE VARIES DEPENDING ON SOIL CONDITIONS.
- NOTE 2:** BLOCKS TO BE BACKFILLED WITH TOP SOIL AND SEEDED FOR VEGETATION.
- NOTE 3:** BLOCKS SHALL BE A MINIMUM OF 5 1/2" THICK AND BE POSITIVELY INTERLOCKING.



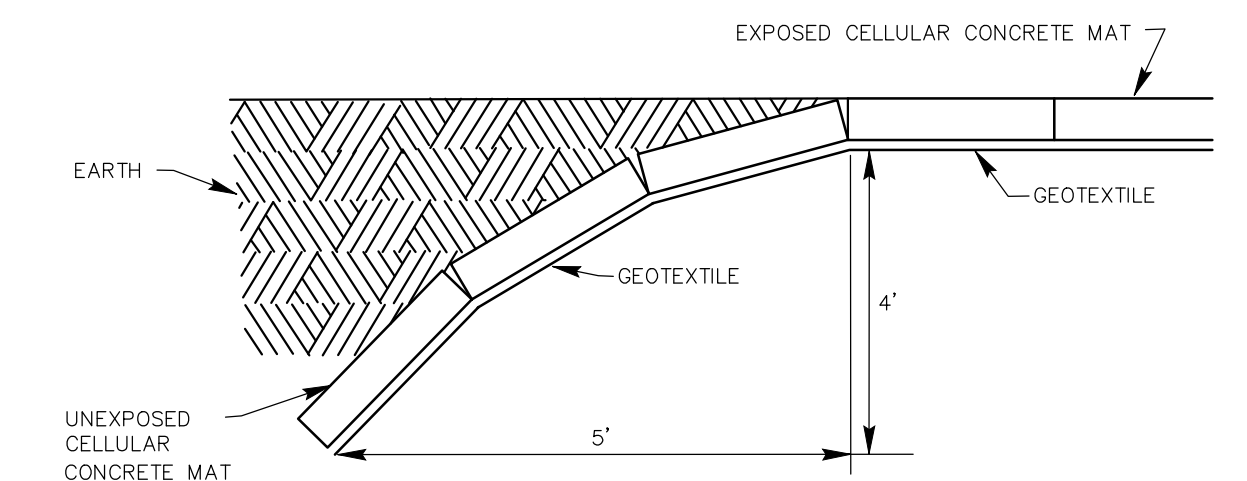
DETAIL - STANDARD SLOPE (4:1 SLOPE)

- NOTE:**
1. THERE IS NO REQUIREMENT TO USE INTERLOCKING BLOCKS IN PRIVATE FACILITIES. CONCRETE SLOPE PAVING MAY BE USED AS AN ALTERNATIVE.
  2. INTERLOCKING CONCRETE BLOCKS MAY NOT BE USED IN DISTRICT OWNED OR MAINTAINED FACILITIES. THE ENGINEER SHALL SUBMIT PROJECT SPECIFIC DATA, INFORMATION AND DESIGN TO THE DISTRICT FOR REVIEW AND APPROVAL. THE BLOCKS SHALL CONFORM TO THE STANDARD DISTRICT SPECIFICATION AVAILABLE IN THE DISTRICT OFFICE OR FROM THE DISTRICT ENGINEER.
  3. THE DISTRICT PREFERS CONCRETE SLOPE PAVING IN LIEU OF INTERLOCKING BLOCK.

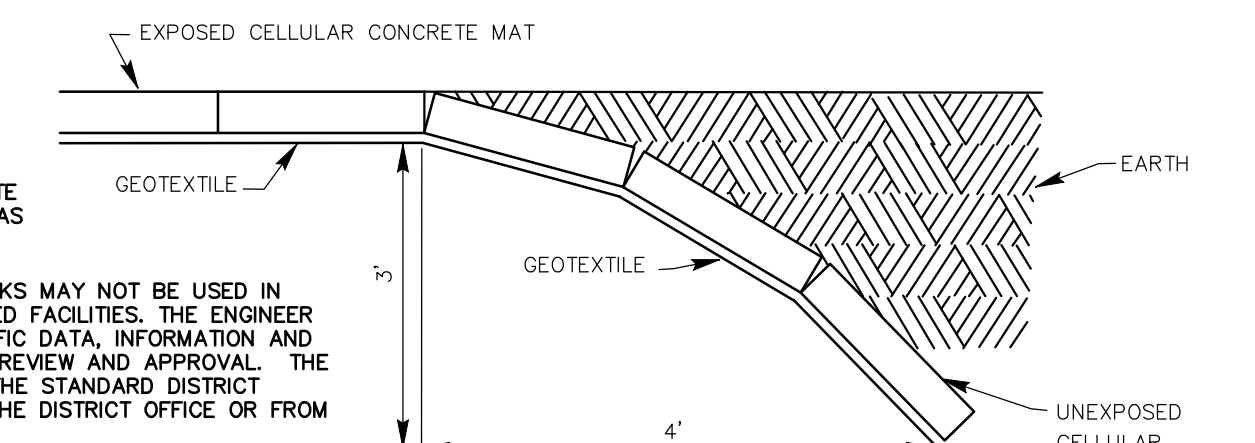
OPTIONAL INTERLOCKING BLOCK DETAIL FOR DISCHARGE INTO  
PRIVATELY OWNED AND MAINTAINED FACILITIES  
DETAIL 2013-07-18-17



DETAIL - SIDE FLANKS



UPSTREAM FLANK



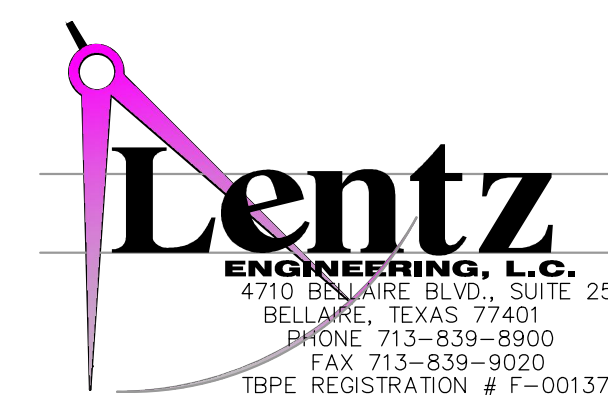
DETAIL - UPSTREAM AND DOWNSTREAM FLANK

- NOTE:**
1. THERE IS NO REQUIREMENT TO USE INTERLOCKING BLOCKS IN PRIVATE FACILITIES. CONCRETE SLOPE PAVING MAY BE USED AS AN ALTERNATIVE.
  2. INTERLOCKING CONCRETE BLOCKS MAY NOT BE USED IN DISTRICT OWNED OR MAINTAINED FACILITIES. THE ENGINEER SHALL SUBMIT PROJECT SPECIFIC DATA, INFORMATION AND DESIGN TO THE DISTRICT FOR REVIEW AND APPROVAL. THE BLOCKS SHALL CONFORM TO THE STANDARD DISTRICT SPECIFICATION AVAILABLE IN THE DISTRICT OFFICE OR FROM THE DISTRICT ENGINEER.
  3. THE DISTRICT PREFERS CONCRETE SLOPE PAVING IN LIEU OF INTERLOCKING BLOCK.

OPTIONAL INTERLOCKING BLOCK DETAIL FOR DISCHARGE INTO  
PRIVATELY OWNED AND MAINTAINED FACILITIES  
DETAIL 2013-07-18-18

NO.	DATE	REVISIONS	APP.
06-01-10	EFFECTIVE		
05-01-13	REVISED STANDARD DETAIL		JDA

# BRAZORIA DRAINAGE DISTRICT NO. 4



STANDARD DETAILS	
DRAWN BY:	
DESIGNED BY:	
APPROVED BY:	
JOB NO.:	
SCALE:	NTS
DATE UPDATED:	05-01-13
SHEET NO.:	3 OF 4