



Brazoria Drainage District No. 4

4813 W. Broadway
Pearland, TX 77581

Tel: 281-485-1434
Fax: 281-485-0065

Brazoria Drainage District No. 4
Benchmark Sheet

Benchmark No. M-7

General Location: John Lizer Road at Mary's Creek

Latitude: 29° 32' 49.36" N

Longitude: 95° 15' 53.12" W

Grid Northing: 13,765,408.28

Grid Easting: 3,155,888.40

State Plane Coordinates, Texas South Central Zone
(4204), NAD 83

Elevation: 46.05 NAVD 88, 2001 Adjustment

Benchmark No. M-7 is a brass disk stamped 'M-7' set on the upstream side of a concrete bridge at John Lizer Road and Mary's Creek, at stream centerline, north side of John Lizer Road, in KeyMap 615U near Unit B100-00-00.

Date: 09/11/15

Detail Sketch

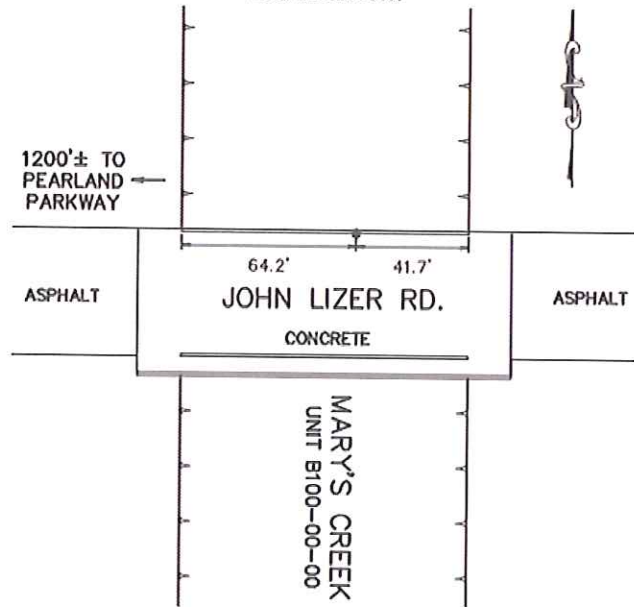


Photo - Station Detail



Photo - Station Area

