



Brazoria Drainage District No. 4

4813 W. Broadway
Pearland, TX 77581

Tel: 281-485-1434
Fax: 281-485-0065

Brazoria Drainage District No. 4
Benchmark Sheet

Benchmark No. C112-3

General Location: County Road 128 and Cannon Ditch

Latitude: 29° 30' 06.72" N

Longitude: 95° 15' 18.57" W

Grid Northing: 13,749,086.86

Grid Easting: 3,159,463.61

State Plane Coordinates, Texas South Central Zone
(4204), NAD 83

Elevation: 39.32 NAVD 88, 2001 Adjustment

Benchmark No. C112-3 is a brass disk stamped 'Brazoria Drainage District No. 4 BM No. C112-3' set on the upstream side of a concrete bridge near stream centerline at County Road 128 (Hasting Cannon Road) and Cannon Ditch, south side of County Road 128, in KeyMap 655L near Cannon Ditch.

Date: 05/09/13

Detail Sketch

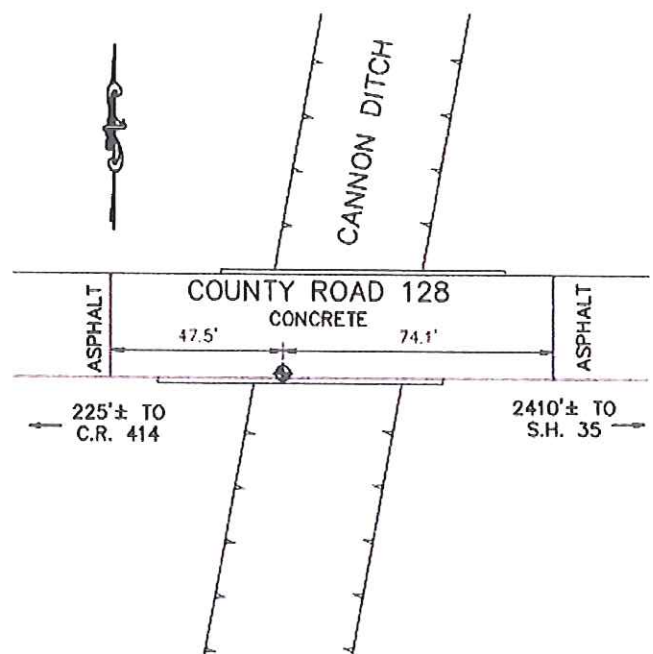


Photo - Station Detail



Photo - Station Area

